

# BLUE LAKE TOWNHOMES

A REPLAT OF ALL OF BLUE LAKE RESIDENTIAL, RECORDED IN PLAT BOOK 109, PAGES 135 THROUGH 144, OF THE PUBLIC RECORDS OF PALM BEACH COUNTY, FLORIDA LYING IN SECTION 12, TOWNSHIP 47 SOUTH, RANGE 42 EAST CITY OF BOCA RATON, PALM BEACH COUNTY, FLORIDA. (FEBRUARY, 2010)

RECORD PLAT PREPARED BY:



Sun-Tech Engineering, Inc.

Engineers - Planners - Surveyors  
Certificate of Authorization Number LB 7019

1600 West Oakland Park Boulevard  
Fl. Lauderdale, FL 33311  
E-Mail: suntech@suntecheng.com  
Phone (954) 777-3123  
Fax (954) 777-3114

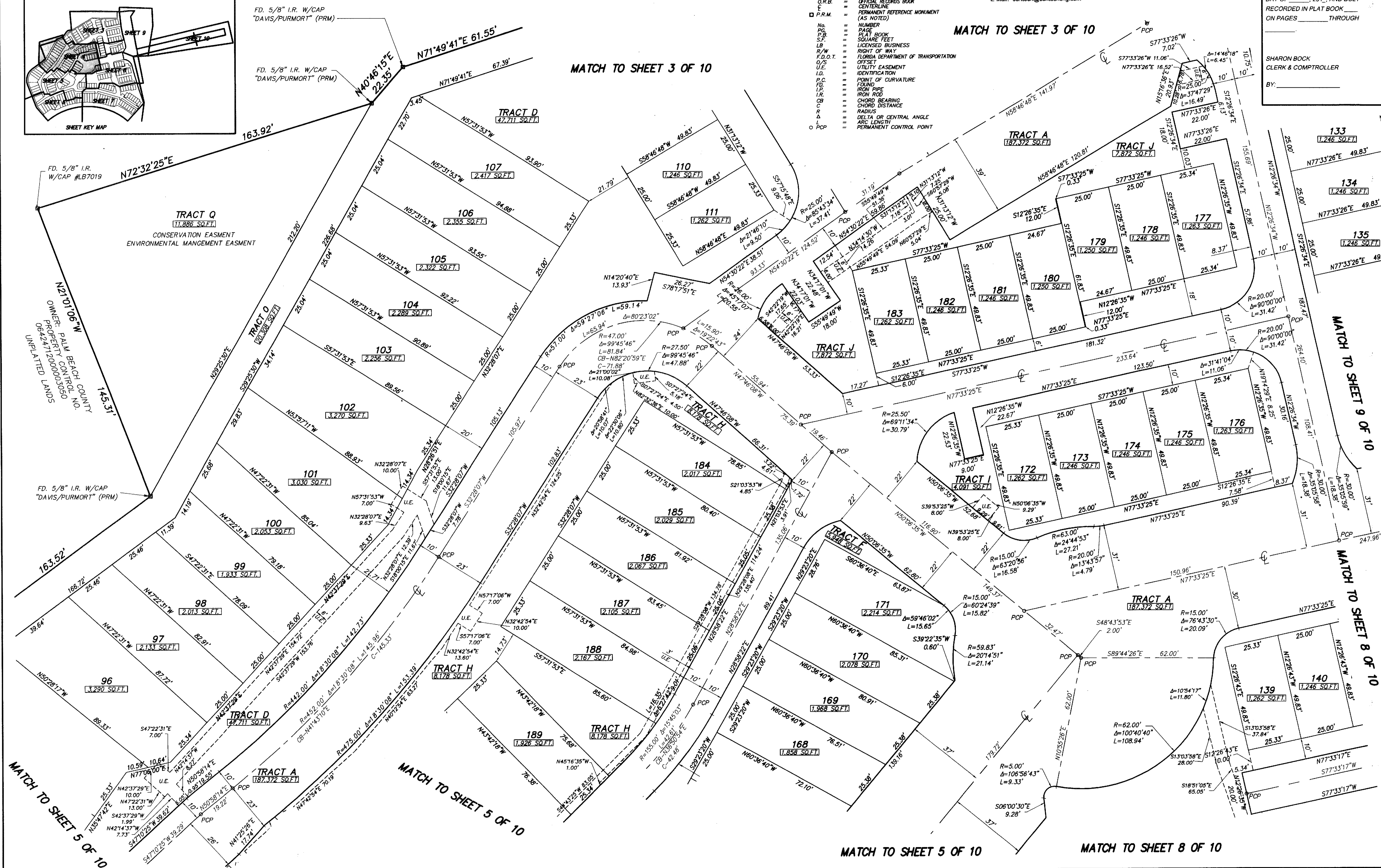
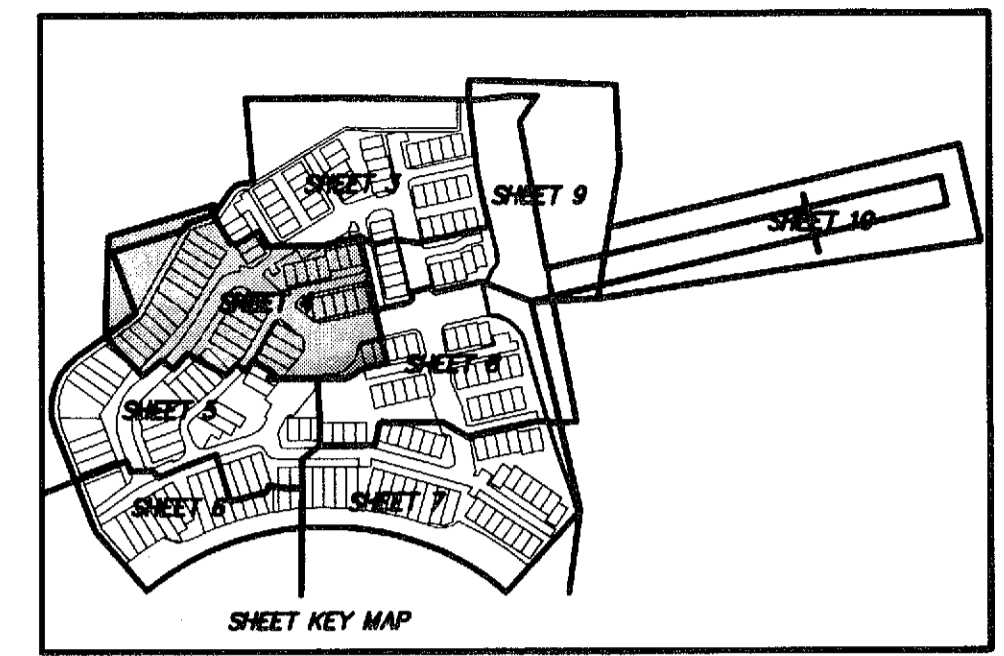
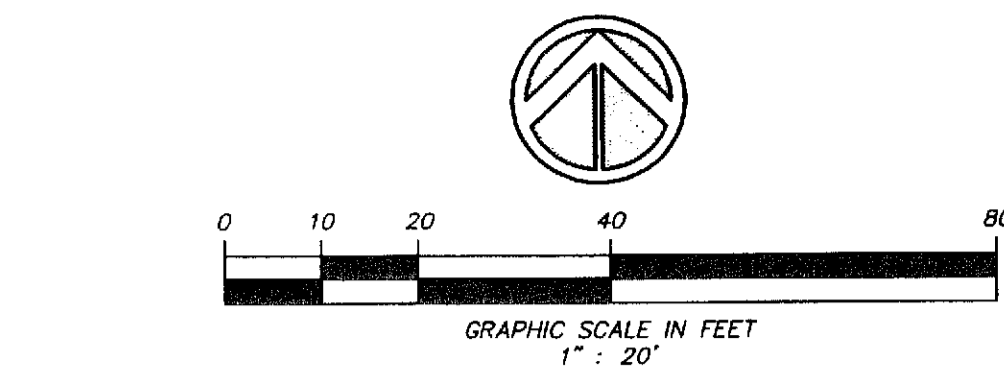
STATE OF FLORIDA }  
COUNTY OF PALM BEACH }  
THIS PLAT WAS FILED FOR RECORD AT \_\_\_\_\_ THIS \_\_\_\_\_ DAY OF \_\_\_\_\_, 2010, AND DULY RECORDED IN PLAT BOOK \_\_\_\_\_ ON PAGES \_\_\_\_\_ THROUGH \_\_\_\_\_

SHARON BOCK  
CLERK & COMPTROLLER  
BY: \_\_\_\_\_

**LEGEND:**

- P.B.C.R. = PALM BEACH COUNTY RECORDS
- O.R.B. = OFFICIAL RECORDS BOOK
- C.L. = CENTERLINE
- P.R.M. = PERMANENT REFERENCE MONUMENT (AS NOTED)
- No. = NUMBER
- P.B. = PLAT BOOK
- S.F. = SQUARE FEET
- LB = LICENSED BUSINESS
- R/W = RIGHT OF WAY
- F.O.D.T. = FLORIDA DEPARTMENT OF TRANSPORTATION
- O.S. = OFFSET
- U.E. = UTILITY EASEMENT
- I.D. = IDENTIFICATION
- P.C. = POINT OF CURVATURE
- F.B. = FINDING
- I.P. = IRON PIPE
- I.R. = IRON ROD
- C.B. = CHORD BEARING
- C.D. = CHORD DISTANCE
- R.A. = RADIUS
- Δ = DELTA OR CENTRAL ANGLE
- L = ARC LENGTH
- PCP = PERMANENT CONTROL POINT

MATCH TO SHEET 3 OF 10



MATCH TO SHEET 5 OF 10

MATCH TO SHEET 5 OF 10

MATCH TO SHEET 5 OF 10

MATCH TO SHEET 8 OF 10

MATCH TO SHEET 9 OF 10

MATCH TO SHEET 8 OF 10